

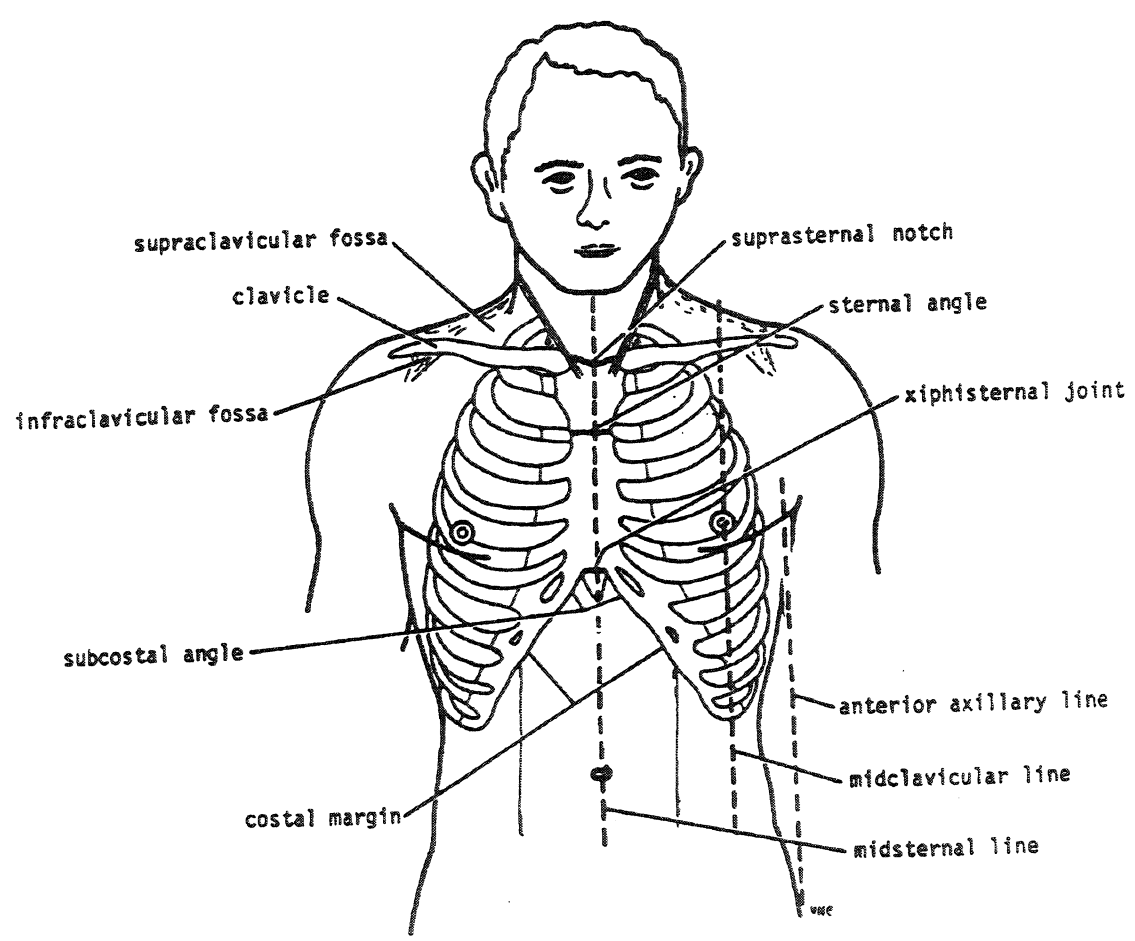
# CHEST

## SURFACE MARKINGS OF CHEST

- Suprasternal notch
- Clavicle
- Sternal angle
- Xiphoid

## SUBSURFACE STRUCTURES

- Clavicle
- Sternum
- Pectoralis M
- Sternocleidomastoid
- Ribs



## RIBS

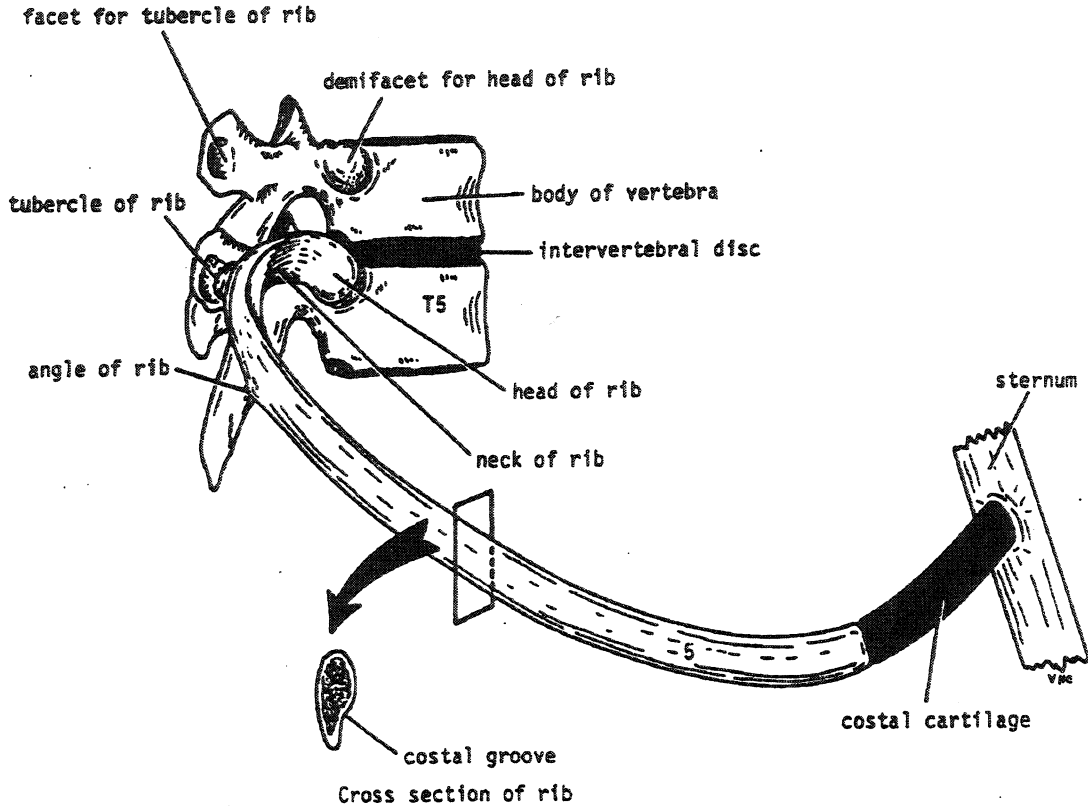
12 Pairs

11 and 12 float

8,9,10 attached to each other by costal cartilage

upper 7 attached to sternum by costal cartilage

**STERNUM**  
 Structure  
 Manubrium  
 Body  
 xiphoid

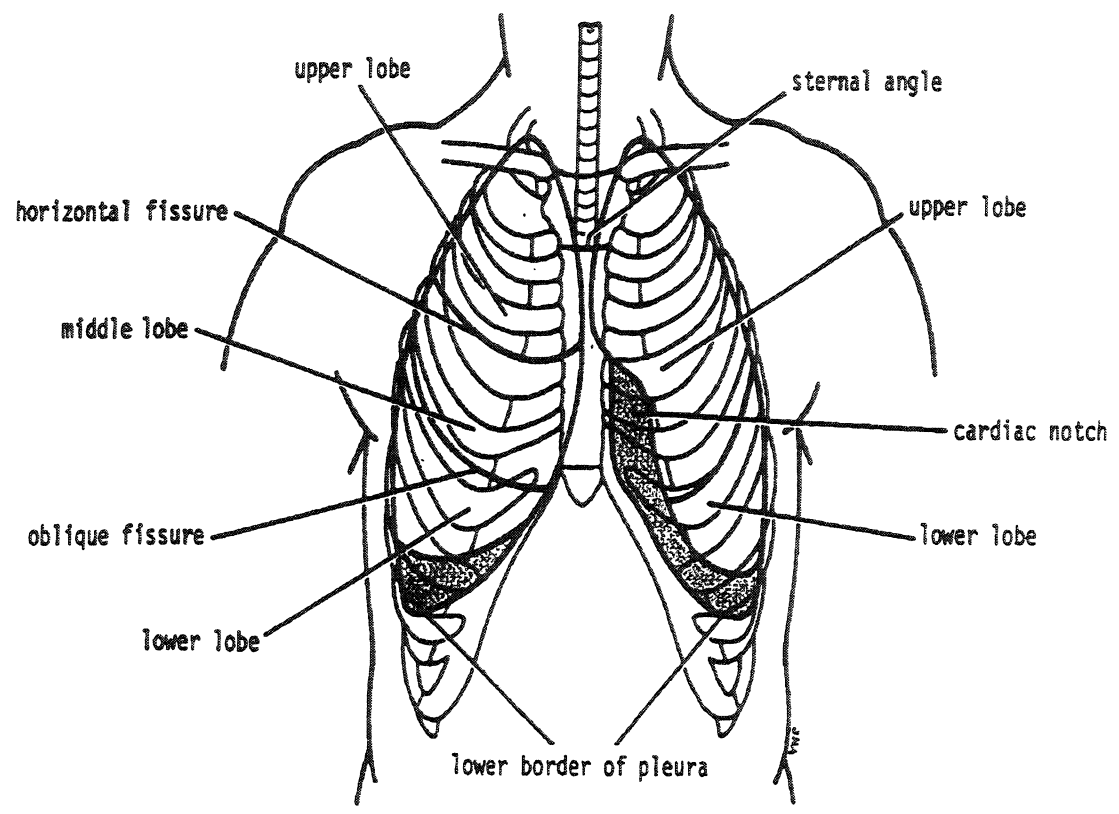


**TYPICAL RIB**  
 HEAD  
 NECK  
 ANGLE  
 GROOVE

**INTERCOSTAL SPACE**  
 MUSCLES  
 VASCULAR BUNDLE

**THORACIC CAVITY**  
 PLEURA  
 parietal  
 visceral  
 MEDIASTINUM  
 Structures  
 heart  
 esophagus  
 vagus  
 aorta

trachea  
 phrenics  
 cavae  
 thymus  
**COSTODIAPHRAGMATIC RECESS**  
**LUNGS**



**LOBES**  
 Superior  
 Inferior  
 Middle

**FISSURES**  
 Oblique  
 Horizontal

**LYMPHATICS OF LUNG**

**THORACIC DUCT**  
 left subclavian  
 rt lymphatic duct - rt subclavian

**AZYGOUS VEIN**  
 Hemiazygous